

The nine warning signs for childhood cancer.

9

The types of cancers that develop in children and adults are often different. The most common cancers of children are leukemias, brain and other central nervous system tumors, lymphomas, and so on. The common cancers in adults are lung cancer, hepatic cancer, breast cancer, and so on. Childhood cancer occurs at all ages, from birth to 18 years old (our age limit). Children may not be able to specify their symptoms, which could also result in delay in diagnosis. The cure rate of childhood cancer has been increasing. Early detection is the key to achieving the best chance of cure.

Contact Us:

Phone: 886-2-23896221 or 886-2-23319953

FAX: 886-2-23319954

E-mail: ccf168,roc@gmail.com

Mailing Address: 6F., No.11, Qingdao W. Rd., Zhongzheng Dist., Taipei City 100, Taiwan (R.O.C.)

Support Childhood Cancer Foundation of R.O.C.

a) Donation:

Account number: 056-82889

Taipei Fubon Commercial Bank— Chengzhong Branch

Name of account: Childhood Cancer Foundation of R.O.C.

b) Number of donating electronic invoice: 88888



Observe your child closely. Seek medical attention early if you find any warning signs of childhood cancer.

1 Unexplained pain or ache

Unexplained pain or ache, such as headache, limb pain (especially lower limbs), chest pain, abdominal pain, and etc



2 Swollen lymph nodes of unclear cause

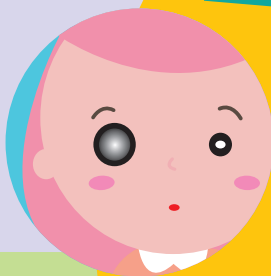
The swollen lymph nodes are often found in the neck. They may also be found in the armpit, or groin. If the nodal size is greater than 2 cm (in diameter), the texture firm or hard, fixed and not easily movable, and lack of pain when pressed, these nodes warrant further evaluation.

3 Lump or mass

See the doctor if your child has a lump or mass on his body or limb. Enlargement of liver, spleen or a tumor in the abdomen is often found while you dress or bathe your child.

9 Symptoms of retinoblastoma

In the sick eye with retinoblastoma, the pupil may look white if the tumor is large. The red reflex is abnormal when taking a flash photograph, thus red reflex from both eyes is different. Diagnosis of retinoblastoma is usually made by funduscopy.



Nine warning symptoms/signs of childhood cancer

Above warning symptoms and signs are not specific to childhood cancer. They may appear in many other childhood diseases; or 2 or more symptoms may appear in one childhood cancer. We encourage you to seek medical attention early if your child has some warning signs.

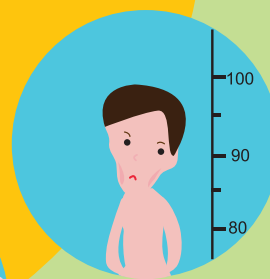
4 Recurrent or persistent fevers of unknown cause

Recurrent or persistent fever for more than one week but with unknown cause



8 Characteristics of neuroblastoma

It's often hard to diagnose neuroblastoma in the early stages, as initial symptoms are not specific. If the cancer has spread to bone marrow, the child may look pale. If the cancer has spread to the orbital bone, bruises around orbit may appear (so called raccoon eyes). A large mass or swelling in the child's abdomen may be present because the primary cancer often grows in the abdomen.



5 Alteration of the growth

Arrest in height growth, body weight loss, or anorexia that occurred with unknown reason

7 Symptoms of central nervous system

Headache, vomiting, double vision, limbs weakness, uncoordinated movement (such as handwriting difficulties), unable to hold a bowl or use chopsticks, unsteady gait or a tendency to stumble while walking, and etc.

6 Symptoms of anemia and bleeding

If the cancer has spread to bone marrow, the child may have pallor, bruises, red bleeding spots, or bleeding from mucosa (such as nasal bleeding or gum bleeding).



If you want to learn more about us, at the following Internet site
http://www.ccfroc.org.tw/child/index_child.php

Childhood Cancer Foundation of R.O.C